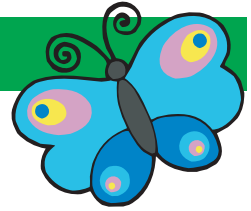


CROSSWORD



FOR KIDS

The crossword puzzle grid consists of the following cells:

- Row 1: 5 cells. The 3rd cell contains the letter **B**.
- Row 2: 5 cells. The 3rd cell contains the letter **T**.
- Row 3: 5 cells. The 3rd cell contains the letter **R**.
- Row 4: 5 cells. The 3rd cell contains the letter **L**.

Arrows from animal illustrations point to the following cells:

- Zebra: Row 1, Column 3 (letter **B**)
- Mouse: Row 2, Column 3 (letter **T**)
- Stork: Row 3, Column 3 (letter **R**)
- Monkey: Row 4, Column 3 (letter **L**)
- Fox: Row 3, Column 4
- Yak: Row 4, Column 4

Where do the words belong?

FOX
MONKEY

MOUSE
STORK

YAK
ZEBRA